



From the Principal Maria

Term 2_2024 Newsletter – Week 5

It has been a busy term thus far and the weeks are passing all too quickly!

We hope that all our mums had a wonderful Mother's Day last Sunday. Congratulations to all our raffle winners as well. Our prizes for the Mother's Day raffle were amazing and I would like to extend a BIG thank you to the local businesses in the area and families who donated some of the prizes. Also, I would like to acknowledge and thank our very own talented Donna who painted the beautiful picture of a kookaburra which was included in one of the hampers and Jodie who did a splendid job putting the hampers together. Our raffle raised \$235 which will go in the PFA kitty.

SCHOOL COUNCIL MEETING

Our next SC meeting will be Monday 3rd June. Just a reminder that all parents are more than welcome to attend meetings should they like to hear more about what is happening at school.

CHPS 150th ANNIVERSARY – Saturday 26th October (Term 4 – Week 3)

Our next 150th Anniversary Committee meeting is scheduled for Monday 3rd June after our SC meeting. We will be inviting local community members to attend and will post this event on community Facebook pages. All parents are invited to come along and be part of the planning process. Our meeting will commence at 5.00pm.

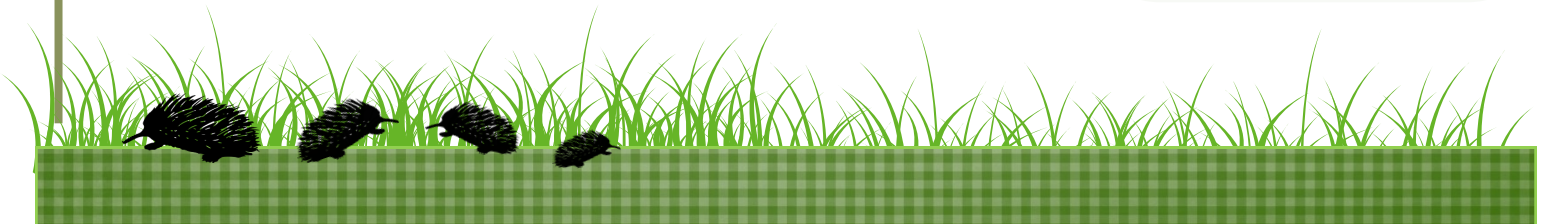
Term Two 17th May, 2024

Important Dates for Term 2

- 13th May - Bush School Excursion - Sugarloaf
- 14th May - Photo trail - Maroon-dah Dam
- 28th May - Edendale Farm excursion
- 4th June - Gymnastics excursion
- 10th June - Kings Birthday public holiday
- 11th June - Gymnastics Incursion
- 18th June - Tiger Paw Incursion
- 25th June - Gymnastics Incursion
- 28th June - Last day of Term 2 - 2:00pm finish

Term Dates

- Term 2 - 15th April - 28th June
- Term 3 - 15th July - 20th September
- Term 4 - October 7th - 20th December



BUSH SCHOOL EXCURSION MONDAY 20TH MAY

Our Bush School Excursion to Sugarloaf Dam has been rescheduled for next Monday. Permission notes have gone home via Sentral so please ensure these are updated. We will head off to Sugarloaf Dam around 1.45pm and return to school at approximately 3.00pm. I know the students are very excited about this event!

CHPS PLAYGROUP

Next Wednesday we will be running our playgroup from 9.30-11.00 here at CHPS. This will take place in Quip Quip and we are looking forward to welcoming new families to our school. Please get the word out to friends and relatives to come along with their little ones and take part in some "messy" play whilst parents/carers enjoy a cuppa and a chat!

EDUCATION SUPPORT DAY -16TH MAY

Education Support (ES) Day is celebrated each year to acknowledge and recognise the extraordinary contribution education support staff make to public education. Here at CHPS we have amazing ES staff who go over and above to support the children here at the school. They truly are the backbone of the school, and I would like to thank each of them for their contributions. Jodie, Donna and Megan you truly are AMAZING, and we appreciate everything you do!



Thank you to families for all your support.

Maria

Prize Winners of the Mother's Day Raffle

1st Prize - Dark Horse

2nd Prize - Kerry K

3rd Prize - Jacqui

4th Prize - Julia R

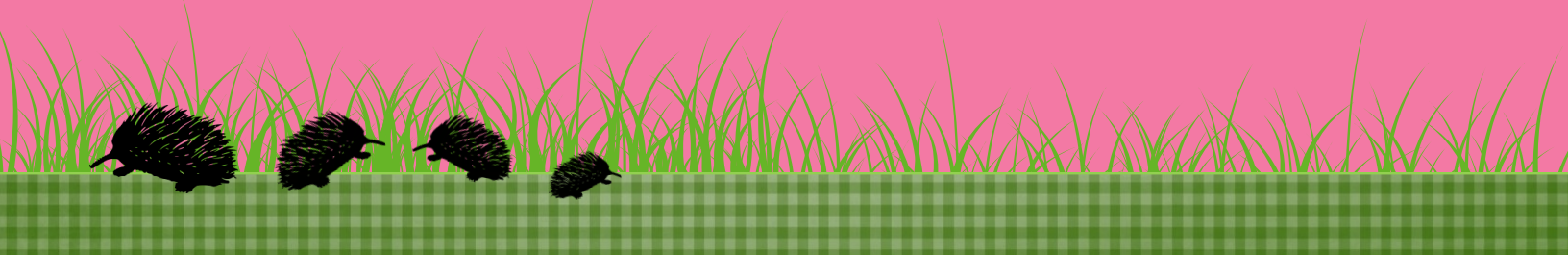
5th Prize - Maria P

6th Prize - Renee T



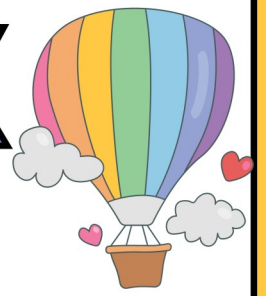


OUR WEEK AT C.H.P.S

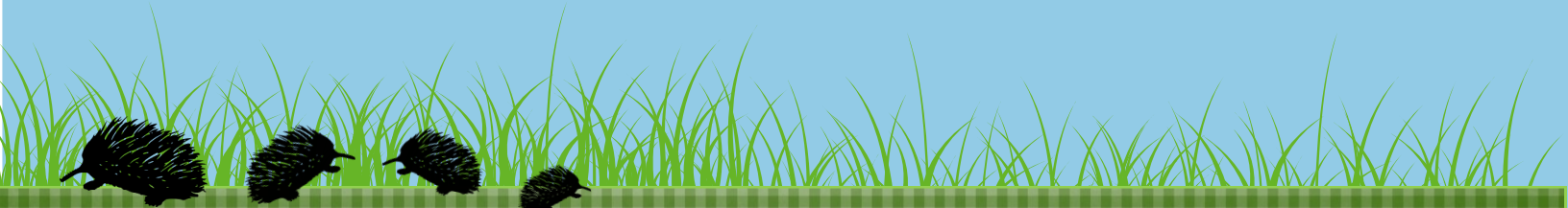




OUR WEEK



AT C.H.P.S



Upcoming Dates Term 2



- 15th April - First day of Term 2
- 23rd April - Curriculum Day
- 24th April - Anzac public holiday
- 14th May - Photo trail - Maroondah Dam
- 28th May - Edendale Farm excursion
- 4th June - Gymnastics Excursion
- 10th June - Kings Birthday public holiday
- 11th June - Gymnastics Excursion
- 18th June - Tiger Paw Incursion
- 25th June - Gymnastics Excursion
- 28th June - Last day of Term 2 - 2:00pm finish



Exciting Activities coming up

Photo Trail Excursion
14th May Maroondah Dam

Edendale Excursion
28th May - Edendale farm

Gymnastics Excursion
June 4th, 11th & 25th

Tiger Paw Incursion
18th June - Richmond Football club

Lunch Orders
Lunch orders from Dark Horse are continuing this term.



CHRISTMAS HILLS PRIMARY SCHOOL PLAYGROUP

Wednesday's
9:30 till
11:00am

Messy Play
Painting
Arts & Crafts
Sensory Activities
Games
Toys
Pretend Play
Songs
Outdoor play

BRING YOUR LITTLE ONE ALONG TO
SOCIALISE, EXPLORE, EXPERIMENT &
PLAY AT OUR RELAXED COMMUNITY
PLAYGROUP. SPEND SOME QUALITY
TIME WITH YOUR MINI WHILE YOU FILL
YOUR CUP CHATTING WITH OTHER
GROWN UPS.
ALL WELCOME!

Christmas Hills Primary School
1409 Eltham-Yarra Glen Rd Christmas Hills

.....
For more info contact Megan 0413 174 415





CHRISTMAS HILLS PRIMARY SCHOOL



CELEBRATING

150
Y
e
a
r
s

Saturday 26th October

10:00am - 2:00pm

1409 Eltham Yarra Glen Road, Christmas Hills

Come and join in the free activities including live music and entertainment for families,
as we celebrate the 150 year anniversary of
Christmas Hills Primary School



Call us to arrange a tour
9730 1238
0499 205 083

1409 Eltham-Yarra Glen Rd,
Christmas Hills, Vic 3775
Christmas.hills.ps@education.vic.gov.au



Kangaroo Ground Pre-school



Exceptional,
flexible, play based
3 & 4 yr old pre-school
in a beautiful and
natural setting

- Rated as Exceeding National Quality Standards
- 9am - 3pm sessions
- Before & after care
- Experienced & nurturing staff
- A strong sense of community



20 Graham Rd, Kangaroo Ground
Phone: 9712 0297
www.kangaroogroundpreschool.com.au

THE

DARK HORSE



CHPS LUNCH ORDER MENU

Nuggets & Chips \$7
Burger & Chips \$7
Napolitana Pasta \$7
Chips \$4
Party Sausage Roll \$2
Party Pie \$2

Chocolate Milk \$3
Strawberry Milk \$3
Orange Juice \$2.5
Apple Juice \$2.5

Zooper Dooper \$2

LUNCH ORDERS EVERY WEDNESDAY

**PLEASE WRITE YOUR ORDER AND CHILD'S NAME ON A BROWN PAPER BAG AND
ENCLOSE CORRECT MONEY.**

LUNCH ORDERS ARE DUE TO THE OFFICE NO LATER THAN 3:30PM TUESDAYS



Call us to arrange a tour
9730 1238
0499 205 083

1409 Eltham-Yarra Glen Rd,
Christmas Hills, Vic 3775
Christmas.hills.ps@education.vic.gov.au

Caring Honesty Inquisitiveness



Christmas Hills Primary School

At CHPS we show our CHIRPS by...

Respect Persistence Sharing

Yard	Transitions	Classes	Toilets	Excursions
Hear calm, polite and friendly voices	Calm, organised	Be mindful of personal space	Good hygiene	Be good role models
See inclusive play with a variety of activities	Enter learning spaces in an orderly manner	Take responsibility for your own learning	Respect others' privacy	Hear calm, polite and friendly voices
See people caring for each other		Respectful listening		Be mindful of the general public
Respect nature				Move in an orderly, calm manner

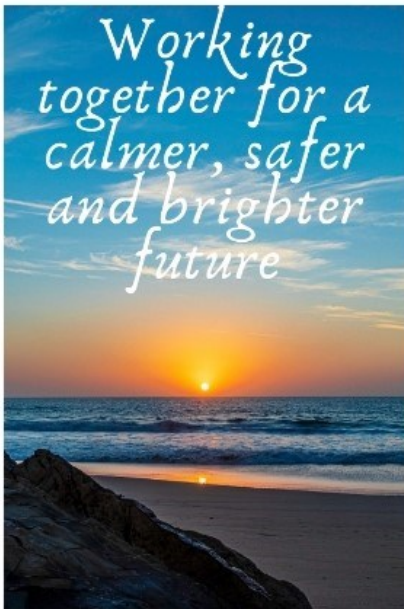
SCHOOL UNIFORM



UNIFORM PRICES

- Polo shirt size 6,8,12,14- \$15
- Polo shirt - Adult S,M, L - \$25.00
- Wide brim hat - \$15
- Communication satchel - \$15
- Child vest - \$20 Adult 25.00
- Blue gingham dress- \$20
- Grade six top - \$50

Improved Relationships



Breakthrough Learning
Mindset Learning

Specialist Behaviour Support

- **Skill Development:** Enhancing your abilities for a more independent life.
- **Functional Behaviour Assessment:** Identifying the reasons behind behaviours to address them effectively.
- **Development of Staff and Support Training Resources:** Educating caregivers and support staff to better assist you.
- **Improved Communication and Social Skills:** Helping you engage more fully with the world around you.
- **Environmental Changes:** Adjusting your surroundings to better support your well-being.
- **Safe Response Methods:** Managing unsafe behaviours effectively and compassionately.
- **Stress and Anger Management:** Teaching coping strategies for a more balanced life

Improved Relationships

Led by Anitha, founder and director of Breakthrough Coaching and Consulting. Anitha has 25 years of experience working with individuals at their point of need. Anitha holds a Masters in Inclusive Education and a Post Graduate Diploma in Working with Children with Autism. She is also an NDIS Registered Behaviour Specialist.



0430 275 400



support@breakthroughconsult.com.au



breakthroughlearning.au



Personalised Intervention Support

- Liaison with and support to **'Team around the individual'**
- Observations of the learning environment
- Educational assessments, reporting and feedback
- Social and Emotional Learning (one to one)
- Transition support (pre-school to primary to high school and beyond)
- Support with learning and engagement
- Developing Individual Education/ Learning Plans (IEPs)
- Developing Positive Behaviour Support Plans
- Development of learning resources
- Build staff capacity to support individuals with Adverse Childhood Experiences, ASD/ ADHD

Our Aims

To motivate and support the individual build healthy relationships by

- building on personal strengths
- Tuning into their emotions
- helping them feel connected to others.
- building confidence and resilience.
- helping adjust to transitions
- building capacity in others to ensure that you or your loved ones receive the specialised care as needed

Immediate Opportunities for New NDIS Participants

Offering prompt and effective support.



Improved Relationships



**BOOK YOUR FREE 20 MINUTE
SESSIONS**

www.cleanenergynillumbik.org.au/eec2024

Expert Eco Chats

**EXPERT HOME
SUSTAINABILITY ADVICE**

**SATURDAY 25 MAY
2:00PM - 4:30PM
ELTHAM COMMUNITY AND RECEPTION
CENTRE**

**Ask about energy efficient products,
solar, draught proofing, going electric,
water efficiency, sustainable building
and much more.**

Proudly brought to you by



Proudly supported by

